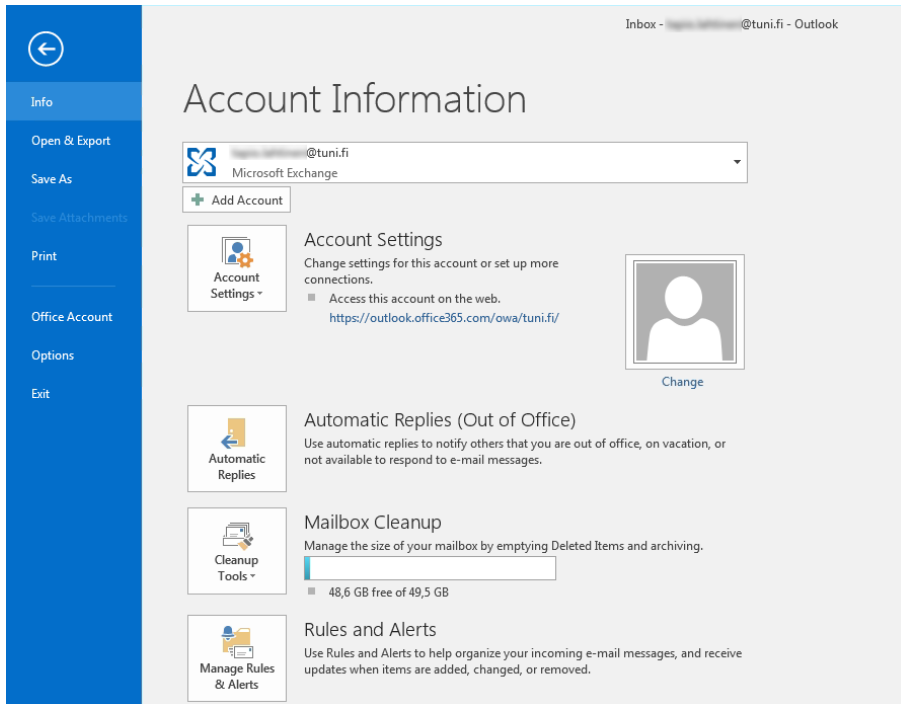


Utapostin käyttöönotto Outlook-ohjelmassa Tuni-sähköpostin käyttöönoton jälkeen

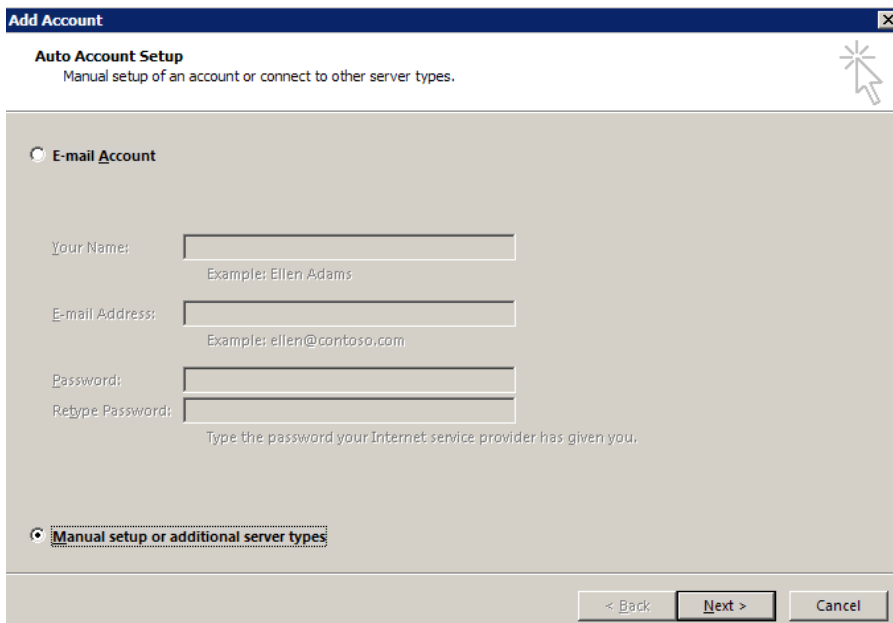
Jos olet käyttänyt Utapostia, joudut lisäämään sen uudelleen Tuni-sähköpostin käyttöönoton jälkeen.

Lisääminen kuvina:

Aloita klikkaamalla Tiedosto/File-ylävalikosta.



Klikkaa Lisää tili/Add Account



Klikkaa Määritä manuaalisesti tai lisää palvelintyyppiä/Manual setup or additional server types.

Add Account

Choose Service

Outlook.com or Exchange ActiveSync compatible service
 Connect to a service such as Outlook.com to access email, calendars, contacts, and tasks

POP or IMAP
 Connect to a POP or IMAP email account

Other
 Connect to a server type that is listed below
 Fax Mail Transport

< Back Next > Cancel

Klikkaa POP tai IMAP/ POP or IMAP

Add Account

POP and IMAP Account Settings
 Enter the mail server settings for your account.

User Information
 Your Name: Oma Nimi
 Email Address: etunimi.sukunimi@uta.fi

Server Information
 Account Type: IMAP
 Incoming mail server: imap.uta.fi
 Outgoing mail server (SMTP): smtp.uta.fi

Logon Information
 User Name: ppt
 Password: *****
 Remember password
 Require logon using Secure Password Authentication (SPA)

Test Account Settings
 We recommend that you test your account to ensure that the entries are correct.
 Test Account Settings ...
 Automatically test account settings when Next is clicked

Mail to keep offline: All

More Settings ...

< Back Next > Cancel

Täydennä tiedot (Käyttäjätunnus/Username = peruspalvelutunnuksesi).
 Paina Lisää asetuksia/More Settings.

Internet E-mail Settings

General | **Outgoing Server** | Advanced

Mail Account

Type the name by which you want to refer to this account. For example: "Work" or "Microsoft Mail Server"

Uta-mail

Other User Information

Organization:

Reply E-mail:

OK Cancel

Täydennä tiedot.

Internet E-mail Settings

General | **Outgoing Server** | Advanced

My outgoing server (SMTP) requires authentication

Use same settings as my incoming mail server

Log on using

User Name:

Password:

Remember password

Require Secure Password Authentication (SPA)

OK Cancel

Internet E-mail Settings [X]

General | **Outgoing Server** | Advanced

Server Port Numbers

Incoming server (IMAP): 993 Use Defaults

Use the following type of encrypted connection: SSL

Outgoing server (SMTP): 465

Use the following type of encrypted connection: SSL

Server Timeouts

Short [Slider] Long 1 minute

Folders

Root folder path: [Text Box]

Sent Items

Do not save copies of sent items

Deleted Items

Mark items for deletion but do not move them automatically

Items marked for deletion will be permanently deleted when the items in the mailbox are purged.

Purge items when switching folders while online

OK Cancel

Test Account Settings

Congratulations! All tests completed successfully. Click Close to continue.

Stop

Close

Tasks | Errors

Tasks	Status
✓ Log onto incoming mail server (IMAP)	Completed
✓ Send test e-mail message	Completed

Klikkaa Sulje/Close.